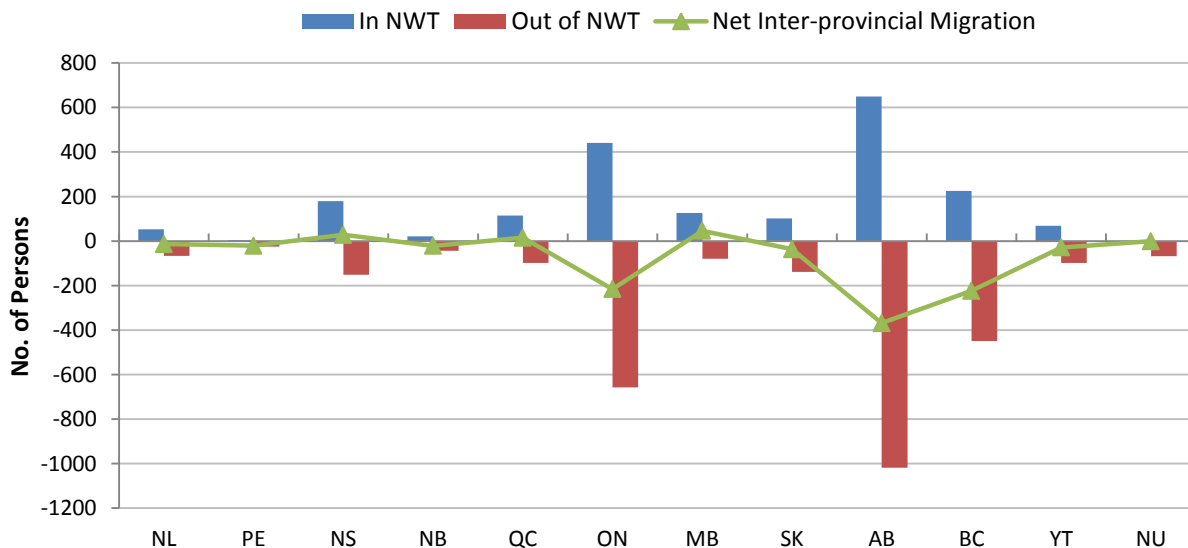


Northwest Territories Population – January 2019 –

On January 1, 2019 Statistics Canada estimated that 44,598 people were living in the Northwest Territories, a decrease of 0.8% (344 persons) from the previous year. The components of natural increase during this period consisted of 624 births and 252 deaths, resulting in a net increase of 372 persons. Interprovincial migration accounted for 2,051 persons moving into the Northwest Territories from other provinces and territories, while 2,895 persons moved away, representing a net loss of 844 persons. Internationally, there was a net in-migration of 128 persons.

Historically, Alberta has accounted for the largest number of net inter-provincial migrants for the NWT. In 2018, 650 persons moved to the NWT from Alberta, while 1,019 persons moved from the territory to Alberta, resulting in the highest net loss among other provinces and territories of 369 persons. The territory also lost people to British Columbia (-224) and Ontario (-216). This was the first loss to Ontario since 2008. The highest net gain of migrants was from Manitoba (+46) (Figure 1).

Figure 1 Inter-provincial Migration by Province and Territory, January 1, 2018 to January 1, 2019



At the national level, Canada's population increased by 1.4% between January 1, 2018 and January 1, 2019. Nunavut experienced the largest increases of 2.9% followed by Prince Edward Island of 2.1%. Only two other jurisdictions, Ontario (+1.8%) and Alberta (+1.7%), exceeded Canada's growth rate. Newfoundland and Labrador was the only other jurisdiction besides Northwest Territories that saw their population decline (-0.7%).

**Table 1 Population Estimates and Annual Rate of Growth, by Province and Territory
January 1, 2016 to January 1, 2019**

	2019 1-Jan	(%) Change	2018 1-Jan	(%) Change	2017 1-Jan	(%) Change	2016 1-Jan	(%) Change
Canada	37,314,442	1.4	36,786,021	1.3	36,309,132	1.2	35,871,136	0.8
Northwest Territories	44,598	-0.8	44,942	0.7	44,626	0.3	44,507	0.8
Nunavut	38,787	2.9	37,709	1.4	37,178	1.2	36,722	1.4
Yukon	40,369	1.1	39,922	2.8	38,833	2.8	37,770	1.6
British Columbia	5,020,302	1.3	4,953,906	1.4	4,886,352	1.6	4,811,465	1.4
Alberta	4,345,737	1.7	4,274,054	1.3	4,219,363	1.2	4,169,830	1.3
Saskatchewan	1,168,423	1.0	1,156,964	1.2	1,143,480	1.4	1,127,773	0.9
Manitoba	1,360,396	1.2	1,344,385	1.5	1,324,455	1.7	1,302,544	1.3
Ontario	14,446,515	1.8	14,190,680	1.6	13,970,658	1.4	13,773,629	0.8
Quebec	8,433,301	1.1	8,341,475	1.0	8,255,776	0.8	8,193,624	0.4
New Brunswick	772,094	0.5	768,229	0.5	764,657	0.5	760,580	0.1
Nova Scotia	965,382	1.1	954,611	0.90	946,061	0.79	938,690	0.0
Prince Edward Island	154,748	2.1	151,535	2.2	148,202	2.1	145,202	0.6
Newfoundland & Labrador	523,790	-0.7	527,609	-0.4	529,491	0.1	528,800	0.1

The detailed components of population change for the Northwest Territories since 2010 are presented in Table 2.

Note:

These population estimates are based on the 2016 Census, adjusted for census net undercoverage. Data may be revised over the coming years, and it is possible that trends will change as a result of future revisions.

For more information about these estimates or for community level population estimates and projections, please visit the NWT Bureau of Statistics website at <http://www.statsnwt.ca> or call (867) 767-9169.

Table 2 Components of Population Change, by Time Period
Northwest Territories – January 1, 2010 to January 1, 2019

		Beginning Population	Ending Population	Births	Deaths	--- Interprovincial Migration ---			Net International	Error of Closure
						In	Out	Net		
2018	Jan-Dec	44,942	44,598	624	252	2,051	2,895	-844	128	-
	Oct-Dec	44,445	44,598	128	57	403	369	34	48	-
	Jul-Sep	44,541	44,445	153	66	454	654	-200	17	-
	Apr-Jun	45,011	44,541	185	64	640	1,241	-601	10	-
	Jan-Mar	44,942	45,011	158	65	554	631	-77	53	-
2017	Jan-Dec	44,626	44,942	635	244	2,101	2,392	-291	216	-
	Oct-Dec	45,097	44,942	133	55	175	417	-242	9	-
	Jul-Sep	44,936	45,097	156	65	562	553	9	61	-
	Apr-Jun	44,832	44,936	187	62	656	754	-98	77	-
	Jan-Mar	44,626	44,832	159	62	708	668	40	69	-
2016	Jan-Dec	44,507	44,626	642	237	1,791	2,291	-500	210	-4
	Oct-Dec	44,556	44,626	133	54	200	256	-56	47	-
	Jul-Sep	44,649	44,556	158	63	395	656	-261	73	-
	Apr-Jun	44,590	44,649	189	60	641	778	-137	66	-1
	Jan-Mar	44,507	44,590	162	60	555	601	-46	24	-3
2015	Jan-Dec	44,140	44,507	683	208	2,047	2,322	-275	155	-12
2014	Jan-Dec	43,800	44,140	665	213	2,259	2,452	-193	70	-11
2013	Jan-Dec	43,737	43,800	669	199	1,871	2,474	-603	184	-12
2012	Jan-Dec	43,648	43,737	688	200	1,864	2,394	-530	119	-12
2011	Jan-Dec	43,263	43,648	690	188	2,169	2,274	-105	31	43
2010	Jan-Dec	42,970	43,263	700	184	1,890	2,060	-170	87	140

Note: *Net International* represents the net total of all Immigrants, Emigrants, Returning Canadians, Non-Permanent Residents and Individuals Temporarily Abroad.
Error of Closure represents the difference in population change as measured by the individual components of growth and that observed using 2016, 2011 and 2006 census-based population estimates.

Source: Statistics Canada, Demography Division.